

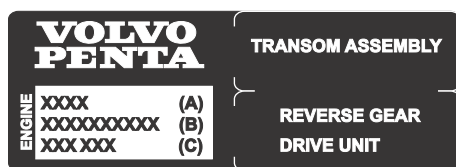
## Models covered

### Identification Numbers

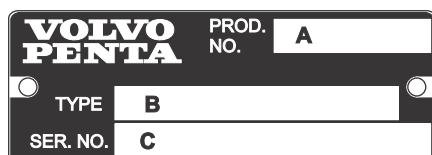
**Importance** Volvo Penta has sold many different products since our first engine was introduced over a century ago. Each of these engine or sterndrive models has unique parts or service requirements, even when compared to models with very similar names.

The key to finding the right parts or service information is correctly identifying which product is being serviced. Each model has a set of unique names and numbers which are used to identify that product. The following information will help you find these names and numbers so that you can correctly identify your product and then find the correct service information (hopefully this information was used when you obtained this manual). When you visit your Volvo Penta dealer to obtain parts, it is very important that you provide the dealer with this information so that they can order the correct parts for your product.

**Location** The following images provide graphical representations of various engine decals.



The engine decal is located on the engine cover.



The engine plate is typically located on the port side of the engine flywheel housing, slightly below and aft of the exhaust manifold. A similar plate is also mounted to the sterndrive and the transom assembly.

Both provide important information for identifying the components of the power package:

- (A) Model Name
- (B) Specification Number
- (C) Serial Number

Whenever you are trying to obtain product information or parts, whether on the web site or at the dealer, using these pieces of information will assure that you receive the specific information that is relevant to your power package.

## Models

This manual covers Volvo Penta power packages that include both the gas engine models listed below **and** one the sterndrives listed below.

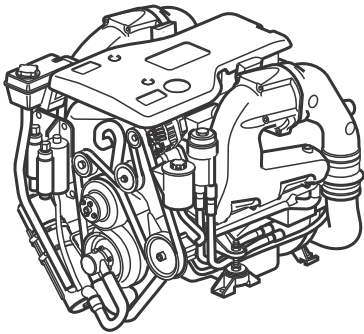
Models of these engines that are mated to other/earlier sterndrives are **not** covered by this manual.

### To insure you have the correct manual:

Visit Volvo Penta's web site, locate the search function for publications and manuals, then use your **engine serial number** to find the correct publications for your product.

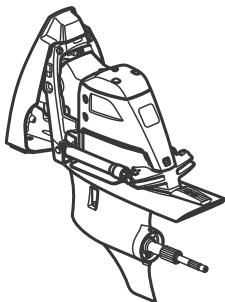
**NOTICE!** do not use this manual if you are not positive that your product is covered in this manual.

## Engine Models



3.0GLP  
 4.3GL  
 4.3GXi  
 4.3GXiE  
 5.0GL  
 5.0GXi  
 5.0GXiE  
 5.0GXiC  
 5.0GXiCE  
 5.7Gi  
 5.7GiE  
 5.7GiC  
 5.7GiCE  
 5.7GXi  
 5.7GXiE  
 5.7GXiC  
 5.7GXiCE  
 8.1Gi  
 8.1GiE  
 8.1GiC  
 8.1GiCE  
 8.1GXi  
 8.1GXiE

## Sterndrive Models



These engines were paired with the following sterndrives;

SX™-A  
 DPS-A  
 DPS-A OXi

Service and repair of these sterndrives and their Transom Shield (TSK) assemblies are covered in this manual. Earlier versions of the SX and DP-S sterndrives are not covered in this manual